



2SY112K7 Test Manual

Synchronism Check Relay

relay monitoring systems pty ltd

Advanced Protection Devices



User Guide



Test Manual



Relay Software



µMATRIXwin

2SY112K7 Test Manual

Links to Other Documents

Technical Bulletin:	http://www.rmspl.com.au/handbook/2SY112.pdf
User Guide:	http://www.rmspl.com.au/userguide/2SY112_user_guide.pdf
Application:	http://www.rmspl.com.au/solutions/2SY112_application.pdf
Acad Case Drawings:	http://www.rmspl.com.au/2SY112acad.htm

Test Certification

This is to certify that the equipment detailed below has been manufactured, inspected & tested in accordance with a Quality System which complies with the requirements of AS/NZS ISO9001-2000.

Order Number	Serial Number

Only valid when the "Passed" box has been signed off by Production Personnel.

Version Control

Issue	Date	Summary of changes
A	15/02/2006	Released.

Due to RMS continuous product improvement policy, this information is subject to change without notice.
This document is uncontrolled and subject to copyright.

Author	Checked & Registered	.pdf file created	Released
ERL	DG	DG	



1.0 HARDWARE SPECIFICATIONS – 2SY112K07 [B][B][B][S]

1.1 Auxiliary Supply

[B] 40 - 275 VAC, 40 - 300 VDC

1.2 Group 1 Status Inputs

[B] 75 - 150 V AC-DC

1.3 Remote Reset

[B] 75 – 150 V AC-DC

1.4 Non-Standard Features

Hardware specifications not described in Technical Bulletin. [S]
Non standard Timing range 0.1 – 1.0 seconds.

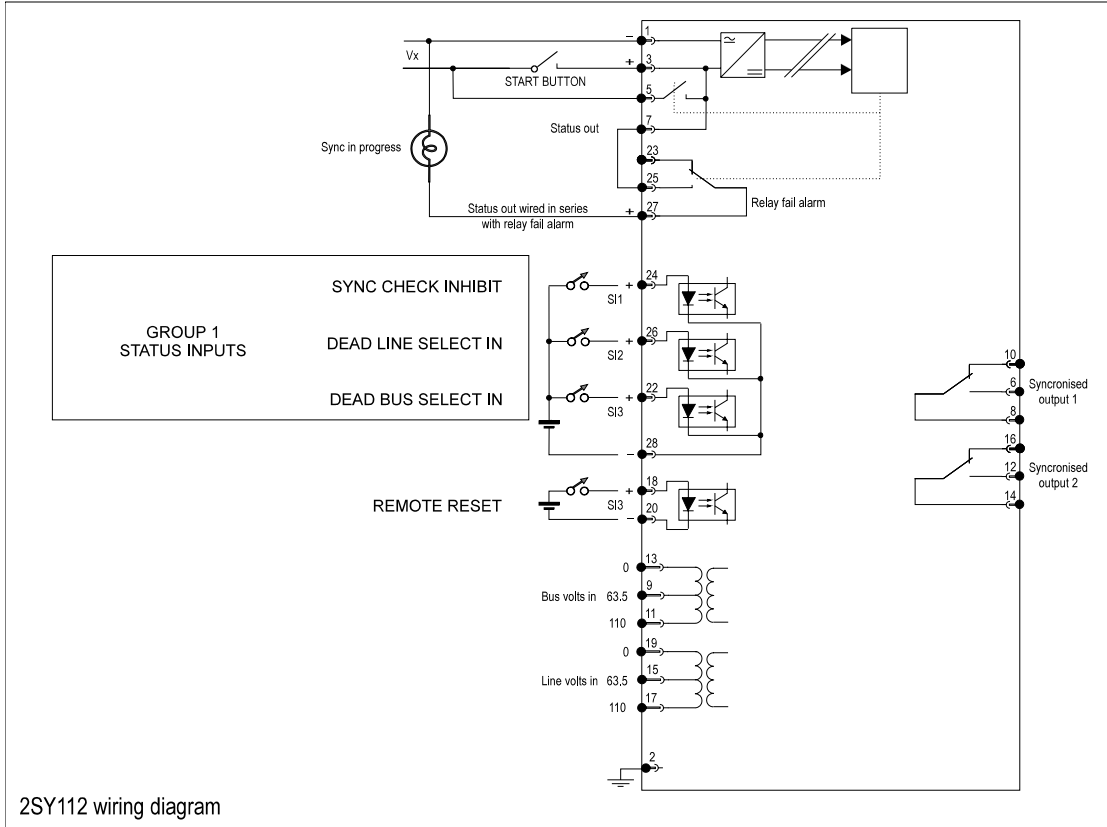
2.0 VERIFICATION

This is to certify that the equipment has been manufactured, inspected and tested in accordance with a Quality System, which complies with the requirements of ISO9001: 2000.

Testing has been carried out against the declared performance specification 171-112-800 and in accordance with the relevant International (IEC) Standards.

PASSED BY	DATE

3.0 CONNECTION DIAGRAM



2SY112 wiring diagram