



2C64 Test Manual

Instantaneous Current Check Relay

relay monitoring systems pty ltd

Advanced Protection Devices





2C64 Test Manual

Links to Other Documents

Links to Other Documents

Technical Bulletin: <http://www.rmspl.com.au/handbook/2c64.pdf>
User Guide: http://www.rmspl.com.au/userguide/2c64_user_guide.pdf
Application: http://www.rmspl.com.au/solutions/2c64_application.pdf

Test Certification

This is to certify that the equipment detailed below has been manufactured, inspected & tested in accordance with a Quality System which complies with the requirements of AS/NZS ISO9001-2008.

Job Number	Serial Number

Only valid when the "Passed" box has been signed off by Production Personnel.

Version Control

Issue	Date	.
A	1/09/2014	Initial issue.

Due to RMS continuous product improvement policy this information is subject to change without notice.
This document is uncontrolled and subject to copyright.

Author	Checked	PDF file created	Registered & Released
MVL	SG	SG	



1.0 ORDER CODE DEFINITION

The order code definition is described below and highlighted for the products manufactured with the Job Number shown on page 1.

2C64		Instantaneous Current Check Relay			
Auxiliary Supply Range	A				20-70V DC
	B				40-300V DC
Current Setting (% of nominal)	A				5-50%
	B				20-200%
CT Rating (Nominal)		A			1 A
		B			5 A
Extra Specified Output Contacts		A			3 C/O 3Φ instantaneous output
		B			3 x 1 C/O instantaneous phase segregated
Relay Initiate Status Input		A			Always Enabled
		B			24 V DC
		C			48 VDC
		D			110 VDC



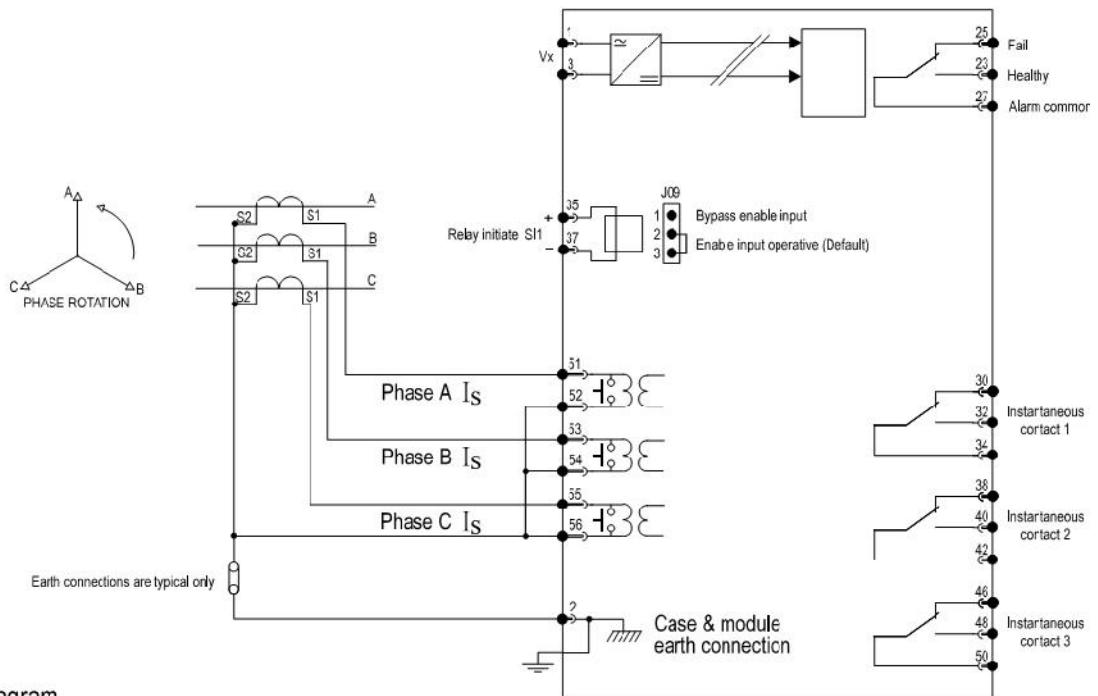
2.0 VERIFICATION

This is to certify that the equipment has been manufactured, inspected and tested in accordance with a Quality System, which complies with the requirements of ISO9001: 2008.

Testing has been carried out against the declared performance specification 159-064-800 and in accordance with the relevant International (IEC) Standards.

PASSED BY	DATE

3.0 CONNECTION DIAGRAM



2C64 wiring diagram