

Phasor Measurement Unit - Synchrophasor

VIZIMAX's advanced Phasor Measurement Unit not only measures the magnitude, frequency and phasors but also allows for advanced power system monitoring, protection and control. VIZIMAX's PMU offers real-time access to power system key measurements, providing situation awareness and improves the reliability on the control actions, reducing uncertainty in the decision-making.

As an essential element of the Wide Area Measurement System, VIZIMAX's PMU exceeds C37.118 requirements for both M and P class accuracy, offers several options related to communication including GOOSE messaging and time synchronization via PPS, PTP1588 or via its internal GPS.

VIZIMAX's PMU is suitable for new or advanced RAS, automation system and projects of all scales in transmission substations and interconnections, distribution substations, power generation, energy storage facilities and renewable energy sources.

Benefits

- **The most compact PMU:** Designed to implement intelligence throughout Transmission and Distribution networks
- **From reactive to predictive and proactive process:** improves system operator's situation awareness, monitors power angle/voltage/frequency and improves dynamic stability monitoring and analysis abilities.
- **Reliable and effective for rejecting harmonics:** including sub-harmonics caused by series compensation
- **Excellent performance in stressed and distributed power systems**
- **Very high resilience to harmonics:** making it an ideal solution for single-phase applications, microgrids and power islanding
- **Post-event analysis:** through sequence of event recorder and waveform analyzer
- **Combined with the powerful RightWON™ built-in C37.118 Client:** PLC, customized control and protection applications, protocol conversions and more

ADJUSTABLE REPORTING RATE

C37.118, IEC61850-9-2, GOOSE

FAST & RELIABLE ROCOF



Phasor Measurement Unit

- Fast, reliable and accurate ROCOF availability
- Up to 200/240 frames per second for 50/60 Hz
- C37.118, IEC 61850-90-5, GOOSE messaging
- TVE of less than 0.50% in steady conditions
- High precision clock base <100 ns
- Exceeds the C37.118.1 requirements for both M and P class accuracy

Operate



SCADA / EMS

Or



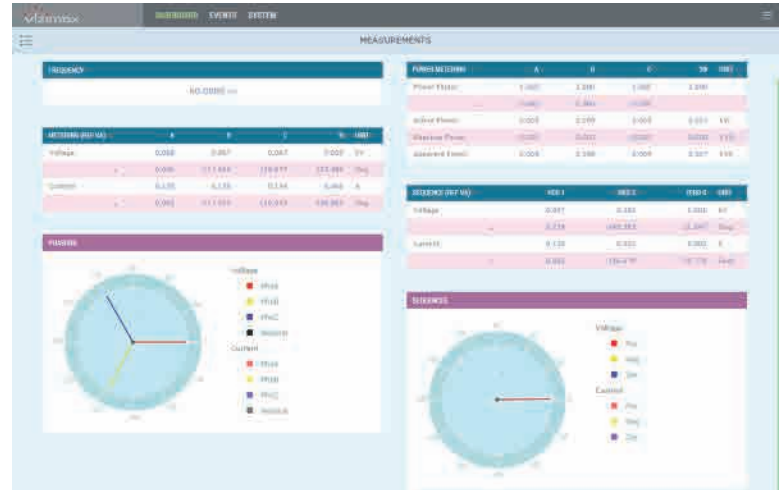
VIZIMAX RightWON™



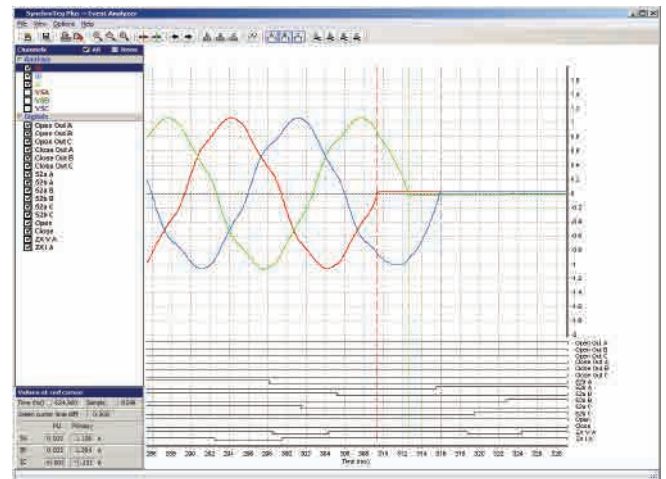
Data storage and event Archiving

Phasor Data Concentrator PDC or RAS

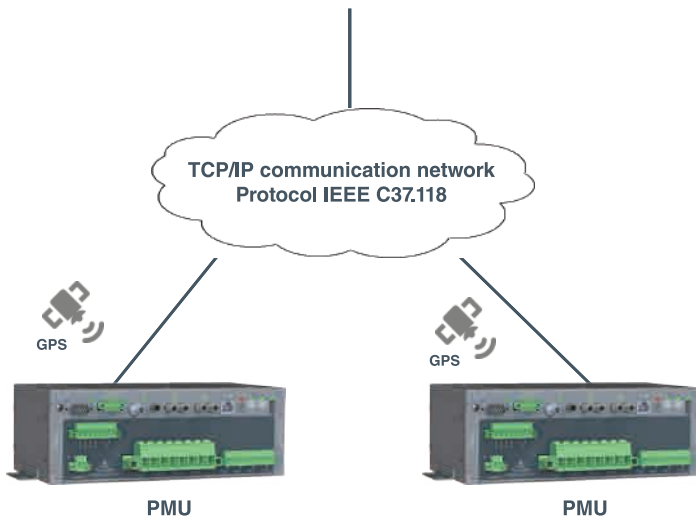
Analyze



Events and alarms database



Waveform analyzer



Ordering Info: PMU010000 - Phasor Measurement Unit

Contact
 sales@vizimax.com
 2284 de la Province Longueuil, QC Canada
 Tel. +1 450 679-0003

www.vizimax.com